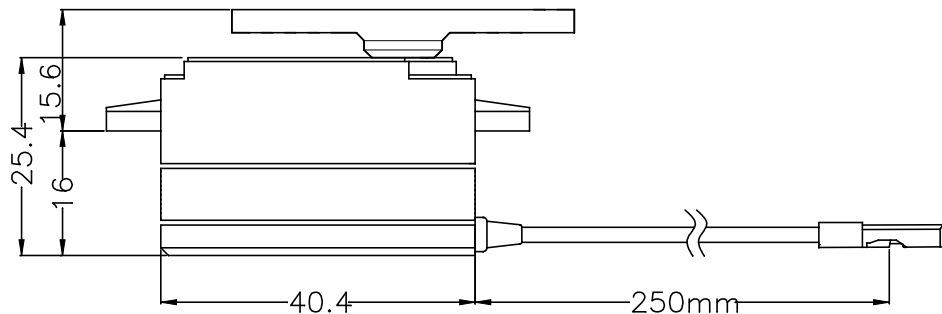
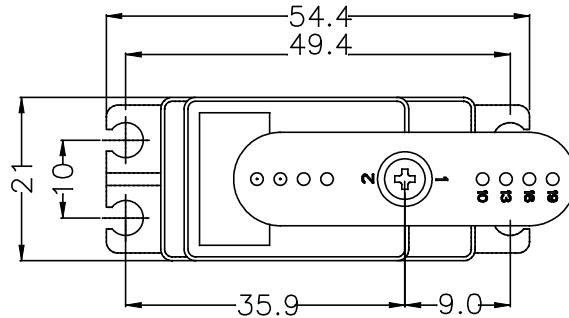


GENERAL SPECIFICATION OF HS-8775MG LOW PROFILED CORELESS DIGITAL SERVO

1. TECHNICAL VALUE

CONTROL SYSTEM	:+PULSE WIDTH CONTROL 900~2100us,1500us NEUTRAL	
OPERATING VOLTAGE RANGE	:4.8V TO 6.0V	
OPERATING TEMPERATURE RANGE	:-20°C TO +60°C(-4°F TO +140°F)	
TEST VOLTAGE	:AT 4.8V	AT 6.0V
OPERATING SPEED	:0.12sec/60° AT NO LOAD	0.10sec/60° AT NO LOAD
STALL TORQUE	:7.2kg.cm(99.98oz.in)	9.0kg.cm(124.98oz.in)
STANDING TORQUE	:-	
IDLE CURRENT	:8mA AT STOPPED	10mA AT STOPPED
RUNNING CURRENT	:200mA/60° AT NO LOAD RUNNING	240mA/60° AT NO LOAD RUNNING
STALL CURRENT	:2000mA 3000mA	
DEAD BAND WIDTH	:1us	1us
OPERATING TRAVEL	:40°/ONE SIDE PULSE TRAVELING 400usec	
DIRECTION	:CLOCK WISE/PULSE TRAVELING 1500 TO 1900usec	
MOTOR TYPE	:CORELESS METAL BRUSH	
POTENTIOMETER TYPE	:1M CYCLE LONG LIFE/INDIRECT DRIVE	
AMPLIFIER TYPE	:DIGITAL AMPLIFIER WITH MOSFET DRIVE	
DIMENSIONS	:40.4x21x25.4mm(1.59x0.82x1.0in)	
WEIGHT	:45g(1.6oz)	
BALL BEARING	:DUAL/MR106/MR126	
GEAR MATERIAL	:1 POM RESIN & 4 METAL	
HORN GEAR SPLINE	:25 SEGMENTS/ø6.0	
SPLINED HORNS	:HEAVY DUTY/IM25, LS25	
CONNECTOR WIRE LENGTH	:200mm(7.87in)	
CONNECTOR WIRE STRAND COUNTER	:80EA	
CONNECTOR WIRE GAUGE	:20AWG	



2. FEATURES

- HIGH RESPONSE LOW PROFILE DIGITAL SERVO
- LOW PROFILED CORELESS MOTOR
- DURABLE METAL GEARS WITH DUAL BALL BEARING
- ULTRA HARDNESS GEAR SHAFT
- WATER & DUST RESISTANT
- 3mm HORN SCREW("+" & HEX SOCKET SCREW INCLUDE)
- APPLIED H25T HORN GEAR

3. APPLICATIONS

- EP CARS
- 1/10 SCALE NITRO CARS
- 30~90 CLASS NITRO HELI
- 600 OVER CALSS HELI