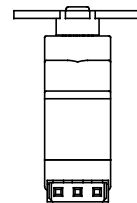
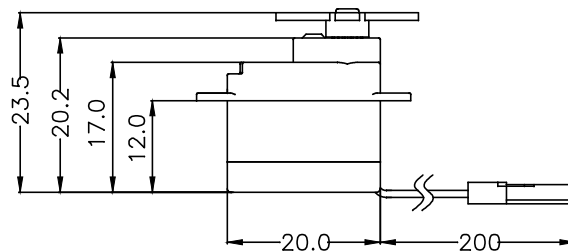
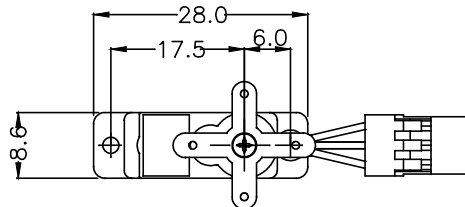


GENERAL SPECIFICATION OF HS-40 NANO SERVO

1. TECHNICAL VALUE

CONTROL SYSTEM	:+PULSE WIDTH CONTROL 1500usec NEUTRAL
OPERATING VOLTAGE RANGE	: ONLY 4.8V
OPERATING TEMPERATURE RANGE	:-20° C TO +60° C(-4° F TO +140° F)
TEST VOLTAGE	:AT 4.8V
OPERATING SPEED	:0.09sec/60° AT NO LOAD
STALL TORQUE	:0.6kg.cm(8.37oz.in)
ROTATION LIFE	:10,000 mln/0.12kg.cm LOADED(At 4.8V)
IDLE CURRENT	:8mA AT STOPPED
RUNNING CURRENT	:60mA/60° AT NO LOAD
STALL CURRENT	:460mA
DEAD BAND WIDTH	:5usec
OPERATING TRAVEL	:40° /ONE SIDE PULSE TRAVELING 400usec
DIRECTION	:CLOCK WISE/PULSE TRAVELING 1500 TO 1900usec
MOTOR TYPE	:CORELESS METAL BRUSH
POTENTIOMETER TYPE	:4 SLIDER/DIRECT DRIVE
AMPLIFIER TYPE	:ANALOG CONTROLLER & TRANSISTOR DRIVER
DIMENSIONS	:20x8.6x17mm(0.87x0.33x0.66in)
WEIGHT	:4.8g(0.16oz)
CASE MATERIAL	:PC/NUDE
GEAR MATERIAL	:RESIN
HORN GEAR SPLINE	:15 SEGMENTS/∅4.0
SPLINED HORNS	:FEATHER(FS-X , FS-IS , FS-IL , FS-IXL)
CONNECTOR WIRE LENGTH	:200mm(7.87in)
CONNECTOR WIRE STRAND COUNTER	:20EA
CONNECTOR WIRE GAUGE	:28AWG



2. FEATURES

LONG LIFE POTENTIOMETER

3. APPLICATIONS

ECONOMY TYPE NANO SERVO, FOR SMALL AIRPLANES